

Zenit PL A Zenit PL TCA

Specifically for Self-test
Specifically for Self-test and DaisaTest System.

DISCOUNT LEVEL C

Includes microprocessor for Self-test mode operation A or DaisaTest centralised management system TCA
Fill out the reference with A or TCA depending on the model. TEV test control unit for Zenit PL TCA: See page 117
Example of order: ZP2 LD-N22 A / ZP2 LD-N22 TCA

Model	Duration	Battery	Lumens	Light source	A €	TCA €
Non-maintained:						
ZP2 LD-N22 <input type="checkbox"/>	1h	Ni-Mh	1000	2xPLLED	-----	-----
ZG4 LD-N22 <input type="checkbox"/>	1h	Ni-Mh	1000	4xPLLED	-----	-----
ZG4 LD-N48 <input type="checkbox"/>	1h	Ni-Mh	2400	4xPLLED	-----	-----
ZP2 LD-2N14 <input type="checkbox"/>	2h	Ni-Mh	700	2xPLLED	-----	-----
ZG4 LD-2N30 <input type="checkbox"/>	2h	Ni-Mh	1500	4xPLLED	-----	-----
ZP2 LD-3N10 <input type="checkbox"/>	3h	Ni-Mh	500	2xPLLED	-----	-----
ZG4 LD-3N22 <input type="checkbox"/>	3h	Ni-Mh	1100	4xPLLED	-----	-----

Zenit PL DALI | Specifically for DALI System

Models for the DALI system are available. By arrangement with the factory.

Zenit PL Luminaire | DOES NOT INCLUDE BATTERY Luminaire specific function

Model	Power supply	Lumens	Light source	€
ZP2 LD L22	See power supply	1000	2xPLLED	-----
ZG4 LD L48	See power supply	2400	4xPLLED	-----

Finishes ■ Accessories

■ Finishes

Finish of	Description	Marking	Incr. €
Colour	White (as standard)	-----	-----
	Dark metallic grey Small dual lamp Zenit	(GR)	-----
	Dark metallic grey Large four-lamp Zenit	(GR)	-----
	Silver grey Small dual lamp Zenit	(RAL9006)	-----
	Silver grey Large four-lamp Zenit	(RAL9006)	-----
	Industrial grey	(RAL7035)	-----
Power supply:			
	Self-contained	220-230V 50/60Hz	-----
		110-127V 50/60Hz	(110-127V) -----
Luminaires		110-240V 50/60Hz, 170-320V DC	-----
		24V 50/60Hz, 18-30V DC	(24V) -----

■ Accessories

Product reference	Description	Diagram	€
KPG Zenit	Accessory for installing Zenit and Zenit PL series projectors (large model) on surfaces that are irregular or under L x H = 270 x 215 mm in size, where the three points on the tie plate cannot be fixed.		-----
KPP Zenit	Accessory for installing Zenit and Zenit PL series projectors (small model) on surfaces that are irregular or under L x H = 150 x 215 mm in size, where the three points on the tie plate cannot be fixed.		-----

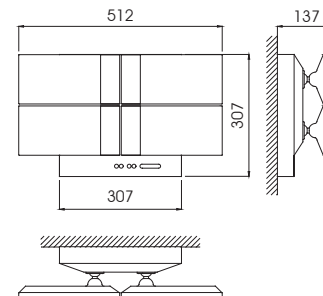
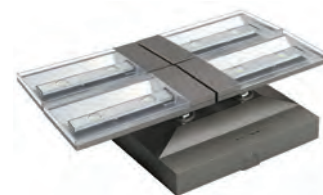
Operation, shared data and notes:

The emergency luminaires equipped with Ni-Mh battery technology include a pulse-load microprocessing system that enables an important reduction of energy consumption.

Features plug & play and anchoring system.

Built to the EN 60598-2-22 (IEC 60598-2-22) standard. Protection rating: IP42 IK04.

Large four-lamp Zenit PL: ZG4 ZG4 (GR)



Small dual lamp Zenit PL: ZP2 ZP2 (GR)

